



MIDDLESEX-LONDON HEALTH UNIT

**Does Being a Parent Make You Feel Like You are Living in a Zoo?**

- Sheila Hattie-Miller, RN, BScN, BSc Psyc, Public Health Nurse
- Nathalie Vandenheuvel, RN, BScN, CCHN(C), Public Health Nurse
  - Heather Lokko, RN, BScN, MPH, CCHN (C)
  - Suzanne Vandervoort, BScN, MEd CCHN (C)

MIDDLESEX-LONDON HEALTH UNIT

- Purpose-Normalize the seeking of parenting support
- Target-Parents from prenatal to teens
- Time Frame-3 year campaign
- Formal Focus Testing-to inform campaign
- THCU-Communication Campaign Toolkit

MIDDLESEX-LONDON HEALTH UNIT

**iParent-Aug 2013**

**PARENTING DOESN'T STOP WHEN YOUR KIDS START SCHOOL.**

*As your child grows up you will face different challenges. There are lots of ways to manage the changes you and your child are going through. Stay involved. Keep parenting. Contact us today to find answers together. 519.850.2280*

MIDDLESEX-LONDON HEALTH UNIT

**PARENTING DOESN'T STOP WHEN YOUR KIDS START SCHOOL.**

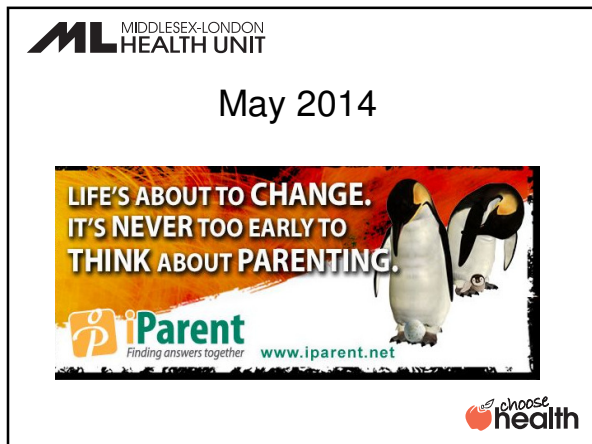
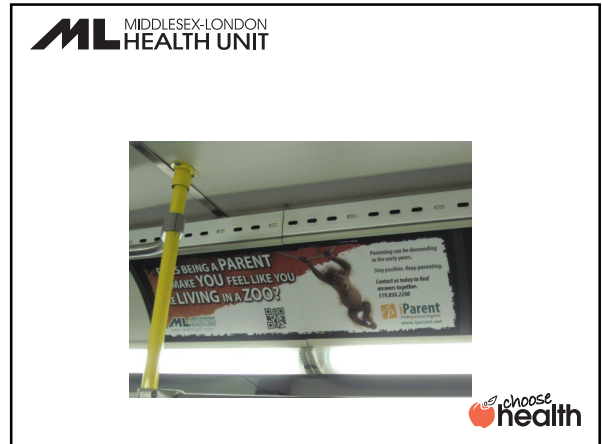
*As your child grows up you will face new challenges. There are lots of ways to manage the changes you and your child are going through. Stay involved. Keep parenting. Contact us today to find answers together. 519.850.2280*

MIDDLESEX-LONDON HEALTH UNIT

**November 2013**

**DOES BEING A PARENT MAKE YOU FEEL LIKE YOU ARE LIVING IN A ZOO?**

*Parenting can be demanding in the early years. There are ways to stay positive and deal with challenges. Contact us today to find answers together. 519.850.2280*

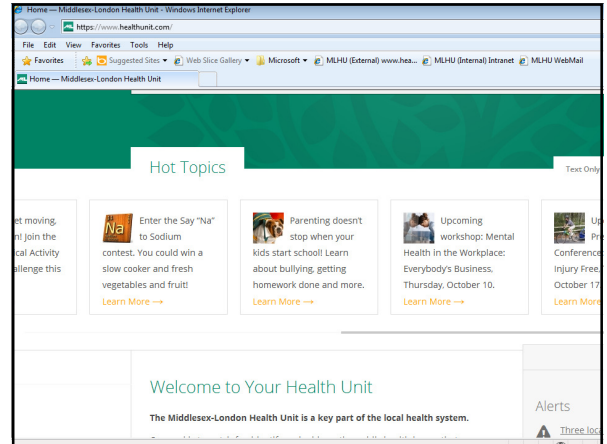
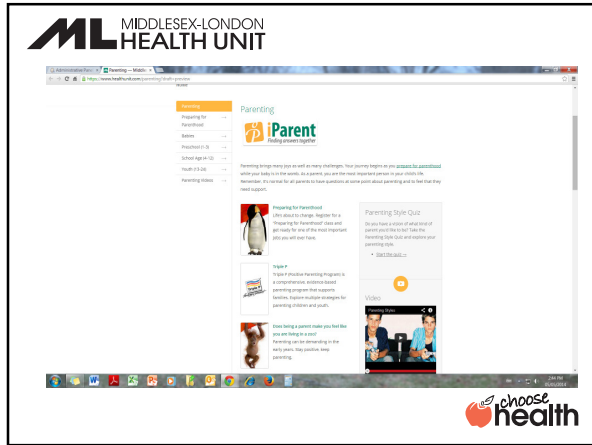
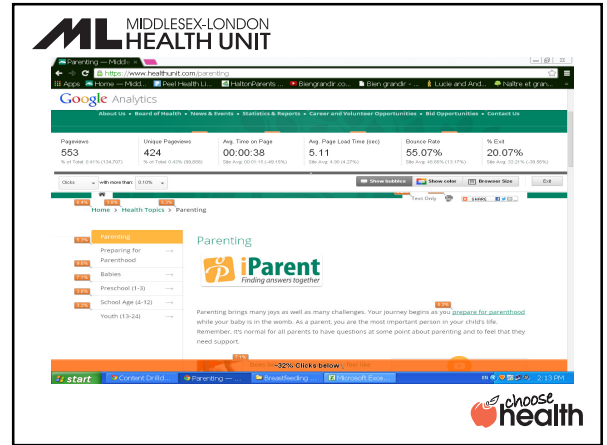


**MIDDLESEX-LONDON HEALTH UNIT**

Website iParent



**iParent**  
Finding answers together

**MIDDLESEX-LONDON HEALTH UNIT**

Classes




**MIDDLESEX-LONDON HEALTH UNIT**

Fall 2014




Spring 2015

IS IT TIME FOR  
"THE  
TALK"?



As your child grows they will have a lot of questions  
You may feel like you don't know all the answers  
Stay involved. Keep parenting.  
Contact us today to find answers together.  
519.850.2280

**iParent**  
Finding answers together  
[www.iparent.net](http://www.iparent.net)

**ML** BUREAU DE SANTE DE  
MIDDLESEX-LONDON  
HEALTH UNIT  
[www.healthunit.com](http://www.healthunit.com)

