

## Developing a Population Health Initiative to Support Early Child Development: The Nurturing the Next Generation Project

Claudine Bennett, RN, BScN  
Judy Buchan, RN, BScN  
Cyndi Gilmer, RN, MHSc(N), DHIthSc(c)



6<sup>th</sup> National Community Health Nurses Conference, May 15, 2012



---

---

---

---

---

---

---

---

## Nurturing the Next Generation

- Background – 10 minutes
- Table Talks – 5 minutes
- Research Findings – 15 minutes
- Practice Implications – 20 minutes
- Wrap up – 5 minutes



---

---

---

---

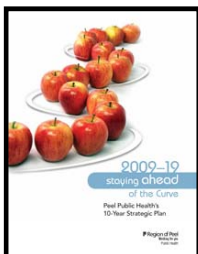
---

---

---

---

## A Peel Public Health Strategic Priority



<http://www.peelregion.ca/health/health-status-report/stay-ahead-curve/>



---

---

---

---

---

---

---

---



---

---

---

---

---

---

---

---

### An Unanswered Question

What are the population level interventions that public health can realistically do to promote social, emotional and cognitive development from the prenatal period to the end of the first year of life?



---

---

---

---

---

---

---

---

Knowledge Synthesis 2010 Grant Awarded  
September 2010 \$96,956



---

---

---

---

---


---

---

---

### Knowledge Translation

- Nurturing Matters Conference
- Website
- Presentations
- Publications



TRENT UNIVERSITY CHHE HSC Region of Peel Health Unit

---

---

---

---


---

---

---

---

### Evidence Use



TRIP Database searches these simultaneously

Quality of Evidence

Systematic Reviews

Critically-Appraised Topics [Evidence Syntheses]

Critically-Appraised Individual Articles [Article Synopses]

Randomized Controlled Trials (RCTs)


Cohort Studies

Case-Controlled Studies  
Case Series / Reports

Background Information / Expert Opinion

FILTERED INFORMATION

UNFILTERED INFORMATION



TRENT UNIVERSITY CHHE HSC Region of Peel Health Unit

---

---

---

---


---

---

---

---

### EIDM Model



Community Health Issues, Local Context


Community and Political Preferences and Actions

Public Health Expertise

Research Evidence

Public Health Resources

National Collaborating Centre for Methods and Tools  
Haynes B, DiCenso, A., Ciliska D., & Guyatt, G. 2005



TRENT UNIVERSITY CHHE HSC Region of Peel Health Unit

---

---

---

---


---

---

---

---

**Realist Methodology**



*What works for whom, under what conditions?*

**Nurturing** matters

TRENT UNIVERSITY CHBE ISC Region of Peel Working for you

---

---

---

---


---

---

---

---

**Realist Methodology**



*What works for whom, under what conditions?*

**Nurturing** matters

TRENT UNIVERSITY CHBE ISC Region of Peel Working for you

---

---

---

---

---

---

---

---

**Table Talks**

**5 minutes**

- What caught your attention?
- What questions came to mind?
- What connections do you see with your own work?

**Nurturing** matters

TRENT UNIVERSITY CHBE ISC Region of Peel Working for you

---

---

---

---

---

---

---

---

## Nurturing the Next Generation Knowledge Synthesis

3 Domains

- Parent Education
- Social Connectivity
- Social Marketing



[www.NurturingMatters.ca](http://www.NurturingMatters.ca)

TRENT UNIVERSITY CHRE USIC Region of Peel Making the most of your investment

---

---

---

---


---

---


---

---

## Parent Education



*What works for whom, under what conditions?*



TRENT UNIVERSITY CHRE USIC Region of Peel Making the most of your investment

---

---

---

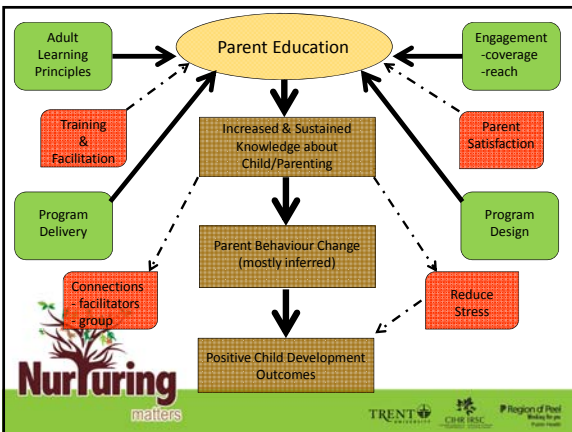
---

---

---

---

---



---

---

---

---

---

---

---

---

### Social Connectivity



What works for whom, under what conditions?



---

---

---

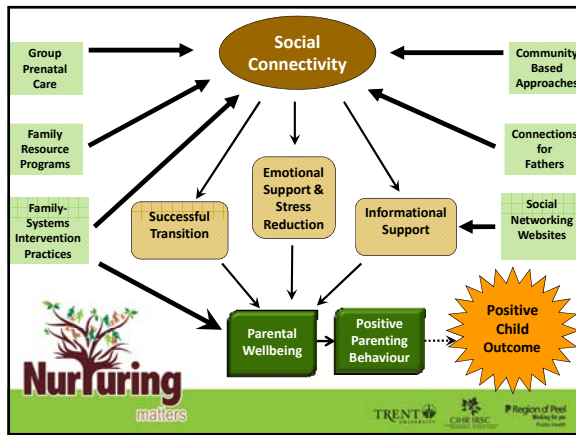
---

---

---

---

---



---

---

---

---

---

---

---

---

### Social Marketing



What works for whom, under what conditions?



---

---

---

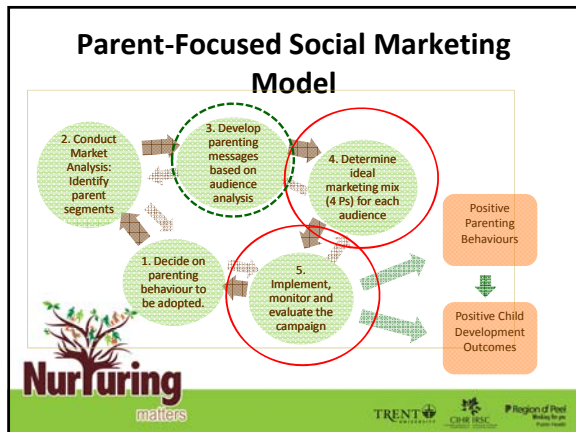
---

---

---

---

---



---

---

---

---

---

---

---

---



---

---

---

---

---

---

---

---

### Turn it on it's Head

At tables, take 20 minutes to:

Consider what the implications for practice might be.....

Nurturing matters

TRENT CHRE USCC Region of Peel

---

---

---

---

---

---

---

---

### Thoughts for Future...

- How can we reinvent our work to support parents and achieve better outcomes?
- How do we effectively facilitate positive parenting behaviours?
- How do we measure the impact of interventions on child development?
  - What is the role of the Community Health Nurse in this reinvention?



---

---

---

---

---

---

---

---

### Contact Information

General Queries – [nurturingmatters@peelregion.ca](mailto:nurturingmatters@peelregion.ca)  
General Information - [www.NurturingMatters.ca](http://www.NurturingMatters.ca)  
Claudine Bennett [claudine.bennett@peelregion.ca](mailto:claudine.bennett@peelregion.ca)  
Judy Buchan [judy.buchan@peelregion.ca](mailto:judy.buchan@peelregion.ca)  
Cyndi Gilmer [cyndigilmer@trentu.ca](mailto:cyndigilmer@trentu.ca)



---

---

---

---

---

---

---

---