

Healthy School Environments: A Public Health Partnership

Cheryl MacLeod

Lead, School & Well Child Services

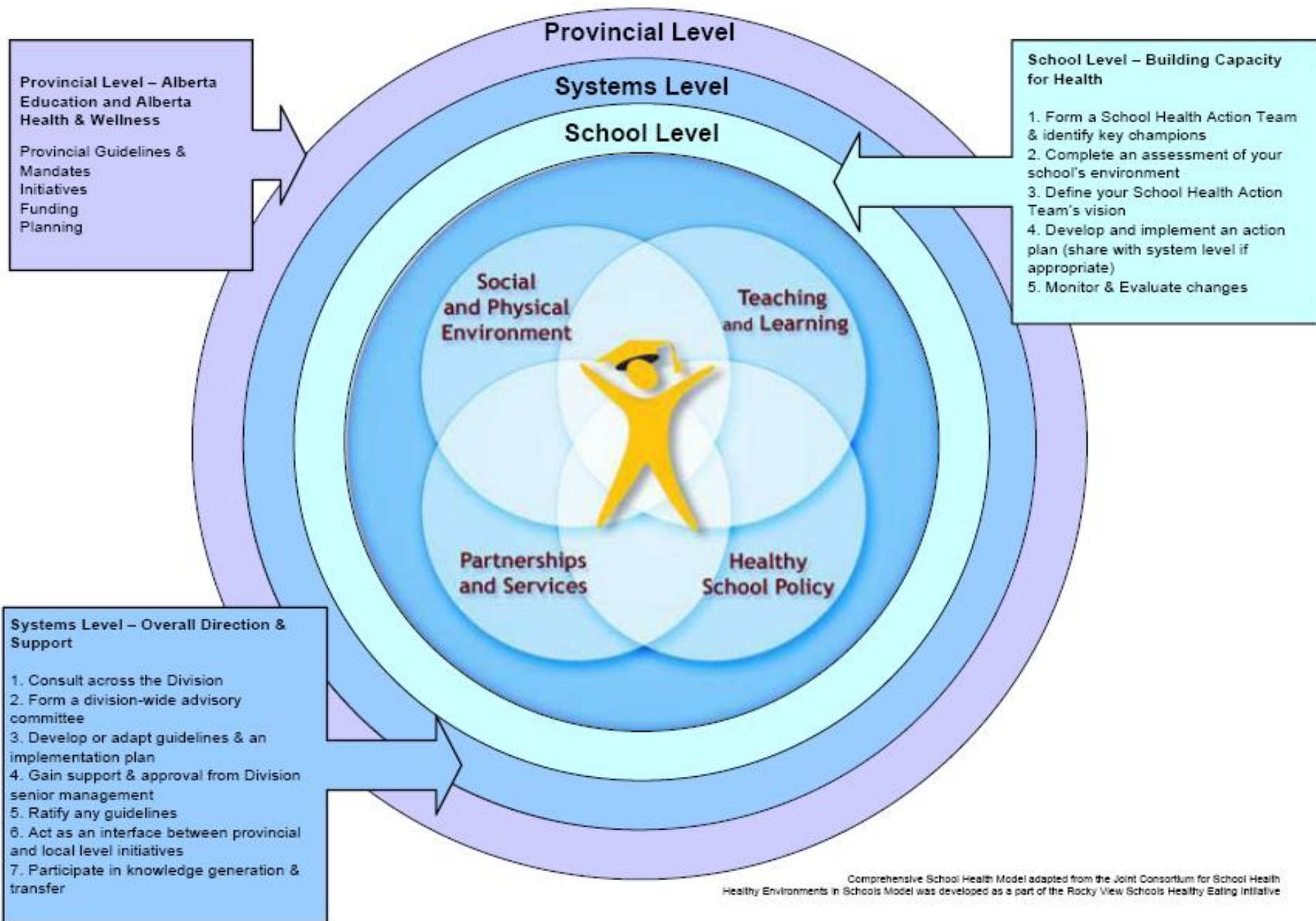
Alberta Health Services, Calgary Zone

5th National Community Health Nurses Conference

May 17th – 18th, 2011

Halifax, Nova Scotia

Healthy Environments in Schools Model



Provincial Level

Alberta Healthy Weights Initiative

5 Strategies:

- Regional health promotion coordinators
- Nutrition Guidelines for Child and Youth – school, day cares, recreation facilities
- Alberta Healthy School Community Wellness Fund
- Healthy School Communities Award
- Healthy Weights Social Marketing Campaign

Systems Level

Healthy Promoting Schools Collaborative (HPSC)

Vision:

- Optimal Health, Optimal Learning

Purpose:

- Health and education work as partners to build productive, strategic, inter-organizational relationships that result in improved health and education outcomes and increased capacity to create healthy school environments.

Health Promoting Schools Collaborative

Functions Include:

- **Advocate** for systemic improvements that positively affect the health of children and youth in schools.
- Act as an **interface** between provincial and local level initiatives related to health promotion in schools.
- **Work with** like-minded organizations throughout Alberta and Canada, as appropriate.
- Serve as the **structure to build readiness and capacity to mobilize resources** in response to emerging school health issues.

School Level



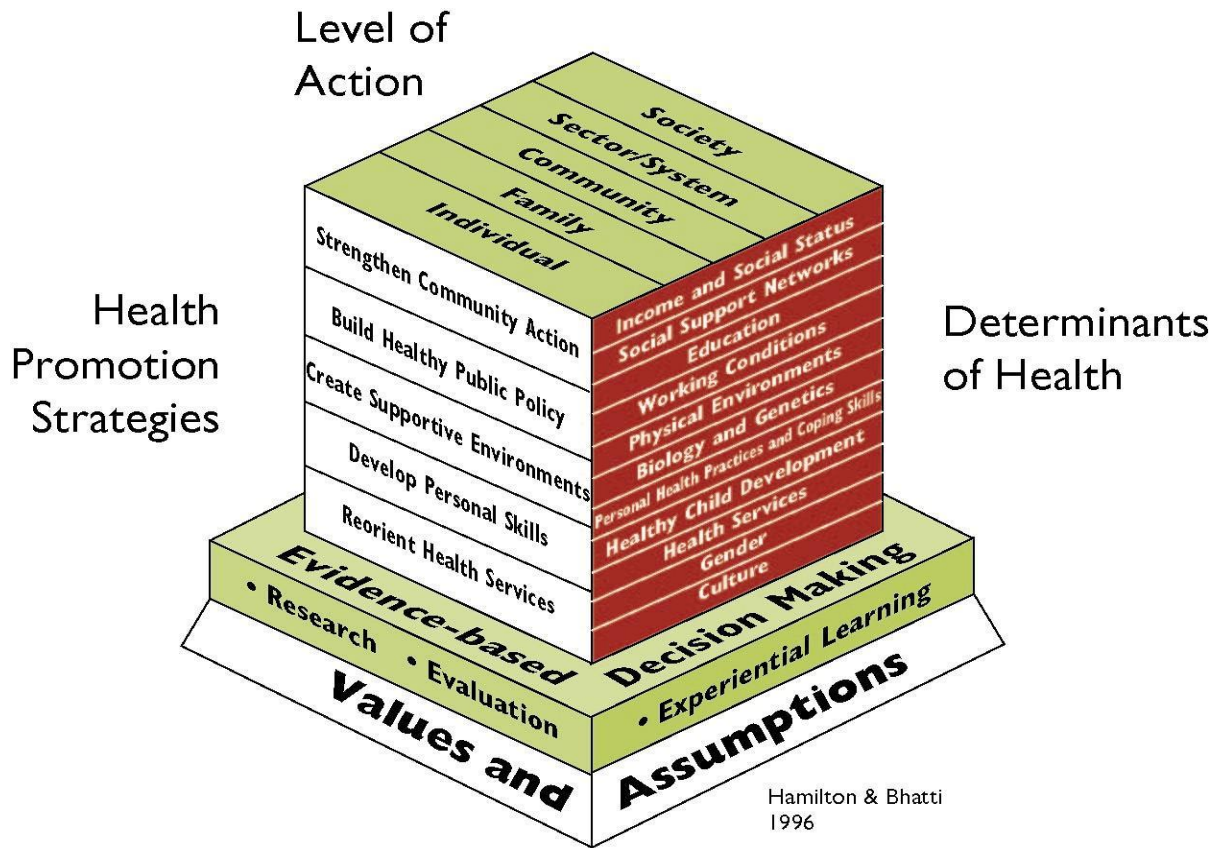
Public Health Nursing Practice With School Communities

Health Promotion

Prevention

Restoration

Population Health Promotion Model



CD Process & Activities	Indicators	Critical Reflection and Evaluation
<p>Community Assessment: Define and describe the community</p>	<p>Information collection tool Key findings School Profile Demographics of communities served</p>	<p>Explain intent, Personal reflection and group reflection Incorporate group's vision and insights.</p>
<p>Community Consultation: Consult with the community to understand the community, its assets, issues and perspectives. Validate assessment data. Identify leaders potential champions and stakeholders.</p>	<p>Individual contacts Group contacts Summary report of interviews and group discussions (assets and issues)</p>	
<p>Forming a Group Community Members who Share a Common Vision</p>	<p>Community collaboration progress chart Terms of reference Vision Assess effectiveness of collaboration (roles, processes, outcomes)</p>	
<p>Build Consensus with Community on Priority Issues.</p>	<p>Consensus building checklist</p>	
<p>Networking and Building on Community Resources</p>	<p>Network Mapping – guide Resource Inventory captured in the Action plan.</p>	
<p>Action Plan and Implementation</p>	<p>School Community Health Action Plan School Health Action Committee Membership List</p>	
<p>Evaluation and Critical Reflection</p>	<p>Evidence of process, outputs, outcomes of Health Action Group PHN workplan Dissemination of Annual Report</p>	

You are never alone!

