



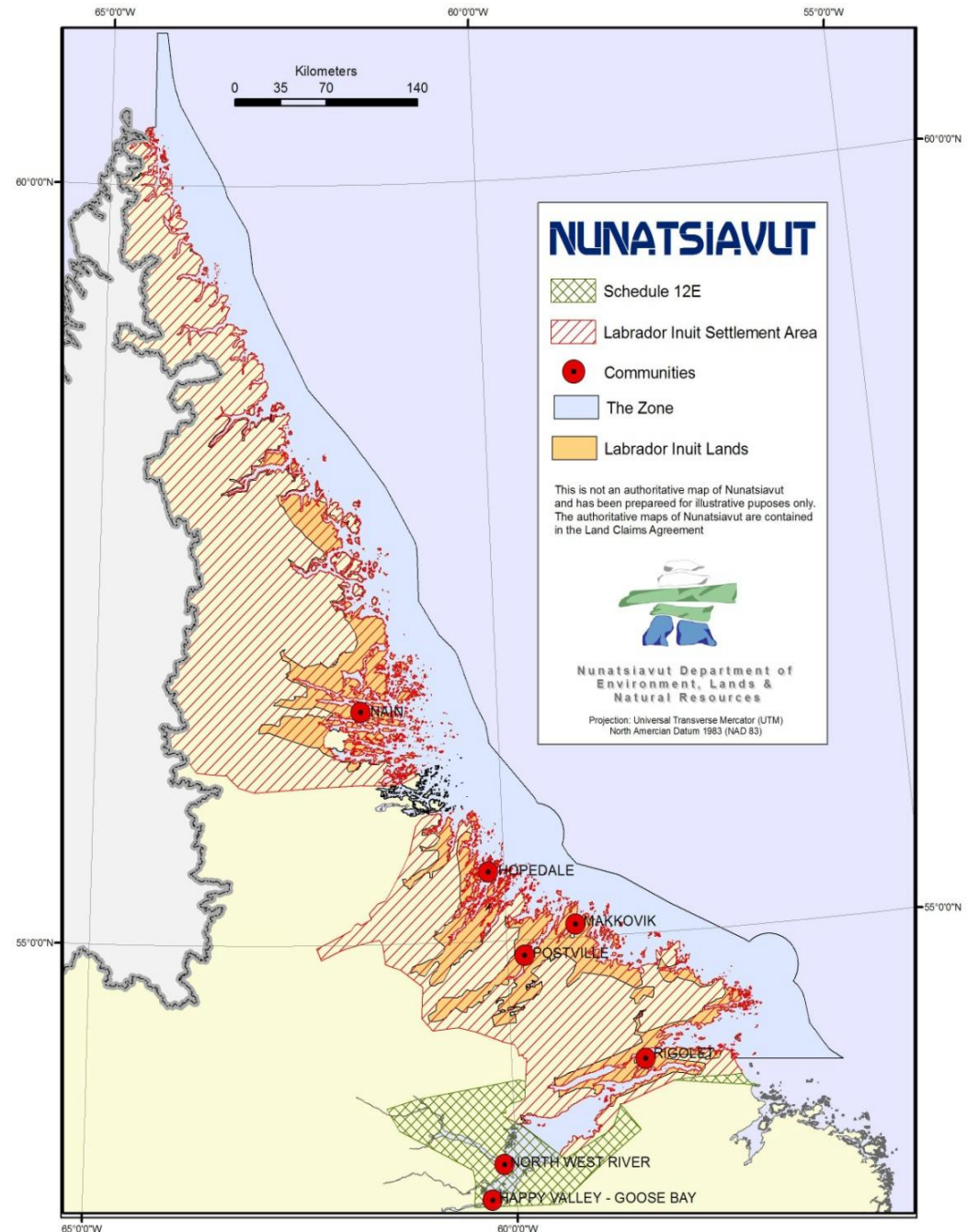
**Something  
Borrowed**

**Something  
New**

# Nunatsiavut



- Located at the northern tip of the Province of Newfoundland and Labrador, on Canada's East coast.
- Covers a geographically diverse area of approximately 72,000km<sup>2</sup> of land and 48,690km<sup>2</sup> of sea.
- Home to 7000+ Inuit and Kablunangajuit.





# Rigolet









# Chronology

- 2003 DF hired as dual Diabetes Coordinator/Public Health Nurse
- 2004 Implementation of Home and Community Care
- 2004 Recruiting at Career Fair in St. John's
- 2005 WE hired as first Home Care Nurse
- 2005 DF on Maternity leave

A photograph of a snowy winter landscape. In the foreground, there is a frozen body of water with some ice floes. In the middle ground, a white building with a red roof and a wooden deck is visible. The background is a dense forest of evergreen trees covered in snow under a clear blue sky.

# Chronology Continued

- 2007 August, DF resigned, moved to Alberta
- 2007 August, WE resigned , moved to Manitoba
- 2007 Attended Career Fair, no interest
- 2007 New service delivery plan
- 2007 Management providing relief service
- 2008 Community Aide position filled
- 2011 Nursing position remained vacant





Diabetic Cookbook  
Under the Health Ministry Commission

PLUCE  
Play  
PR  
BABY  
KNOW'S BEST CH  
Comfort Messages  
THE BEST  
in P.H. office

WOULD YOU FEED THIS TO YOUR BABY





Amy

# Community Health Aide/Practitioner Program

- Alaska natives providing health care to their own people
- Overcome the limits to health care access by having a culturally acceptable provider in villages
- Improve health outcomes and decrease cost of care by avoiding transport for routine problems and health maintenance
- Extend the doctors' eyes, ears and hands to village

# Minimum Qualifications for a CHA

A group of seven healthcare workers, likely nurses or doctors, are standing in a line, wearing white lab coats. They are smiling and looking towards the camera. The background is a plain, light-colored wall.

- Resident of the community
- Read & write English at 6th grade level
- Arithmetic at 6<sup>th</sup> grade level
- Physically able
- Acceptable to residents
- Willing to leave home for training
- Preferably speaks local native language



# **Community Health Aide**

Job Posting

Job Description

Orientation

# Staffing

## Rigolet

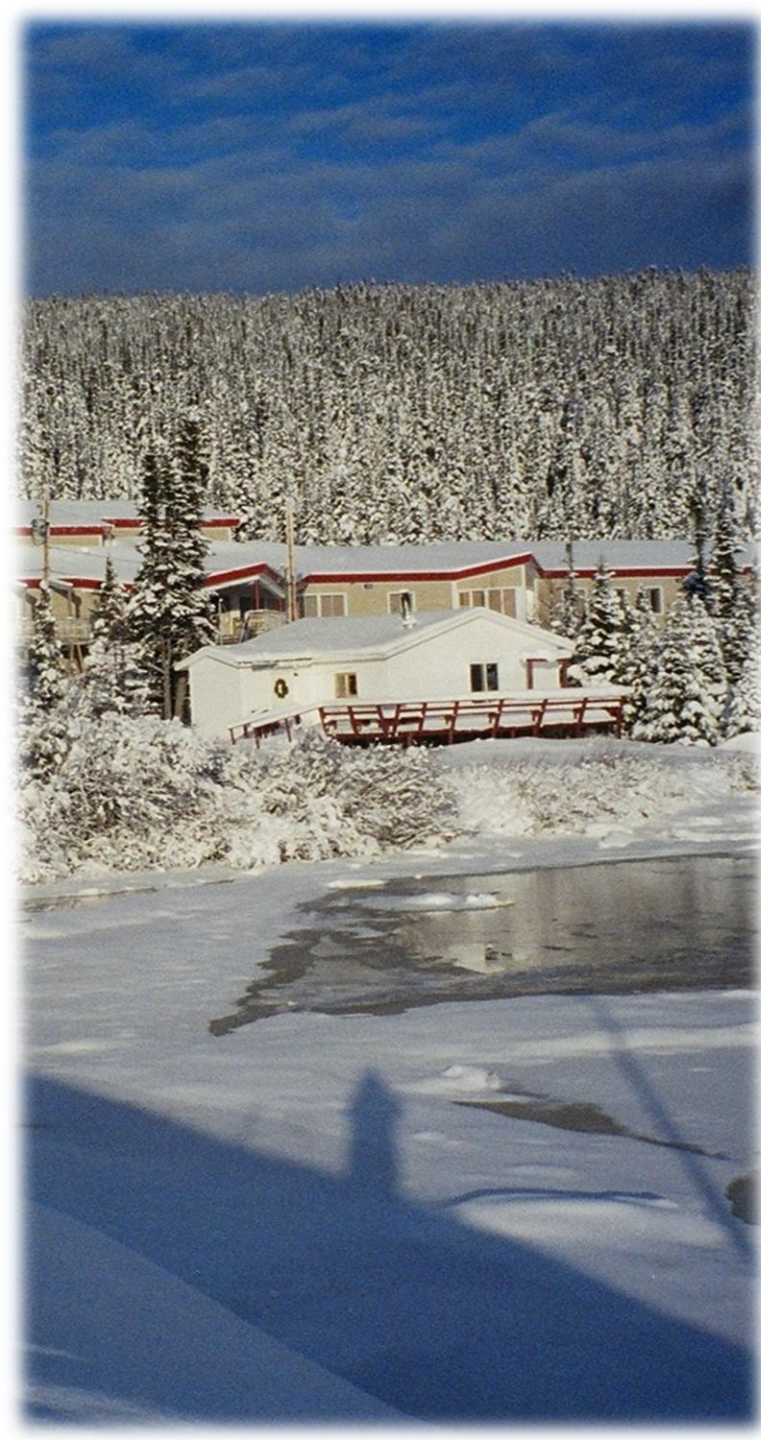
Home care/Public Health nurse  
CHA – hired Jan '08

## Makkovik

Home Care/Public Health nurse  
CHA hired Dec '08

## Postville

Home Care/Public Health nurse  
CHA hired June '09 for maternity leave



# CHA Workshop Feb '09





# What was Covered:

- Provincial rabies program
- Tuberculosis
- Breast feeding
- Human resources
- Visits to local regional resources







Canadian Health Services Research  
Foundation

**Evidence Boost for Quality, Sept 2007**

Problem: Limited health human  
Resources leave some patients  
Underserved.

Strategy for Change: Lay health workers

2005 Cochrane Review lay health  
worker programs increase immunization  
& breastfeeding rates, and decrease death  
in the elderly by providing home aide  
Services.



NUNATSIAVUT









# **What Gets Done ?**

**Immunization**

**Vaccine Management**

**Health Records Management**

**Home Support Management**

**Clients assessments/reassessments**

**Maternal Nourishment**

**Breastfeeding Support**

**Childbirth Education**

**Monitoring of client needs**

**Scheduling of nurse visits**

**Communication with the clinic and the**

**Nurse Coordinator**





## **What Doesn't Get Done ?**

**Continuous Home Care Nursing**

**Palliative Care**

**Health Teaching**

**Full range of childbirth education**

**Postnatal Support**

**Close Diabetes Follow up \*\*\***

**TB Testing**





**Nakummek**