

OnCore

Core skills for public
health practice



EnCours

Compétences essentielles
pour la pratique de
santé publique

Developing Core Competencies with OnCore: An Education Opportunity for Public Health Nurses and their Employers

CHNC Conference, May 31, 2016

**Bev Bryant (Manager)
Julie Atkinson (Advisor)
Education & Research
Peel Public Health**



Objectives:

- 1) Describe key elements of OnCore
- 2) Review online course space
- 3) Apply content through a facilitated case study
- 4) Identify ways that OnCore can be implemented in your own organization

Why develop a new course?

- Gap in core competencies among public health workforce (new and experienced)
- Diverse workforce and educational backgrounds
- Environmental scan of existing courses:
 - Lack of available learning resources for front line public health professionals
 - Lack of in-service programs



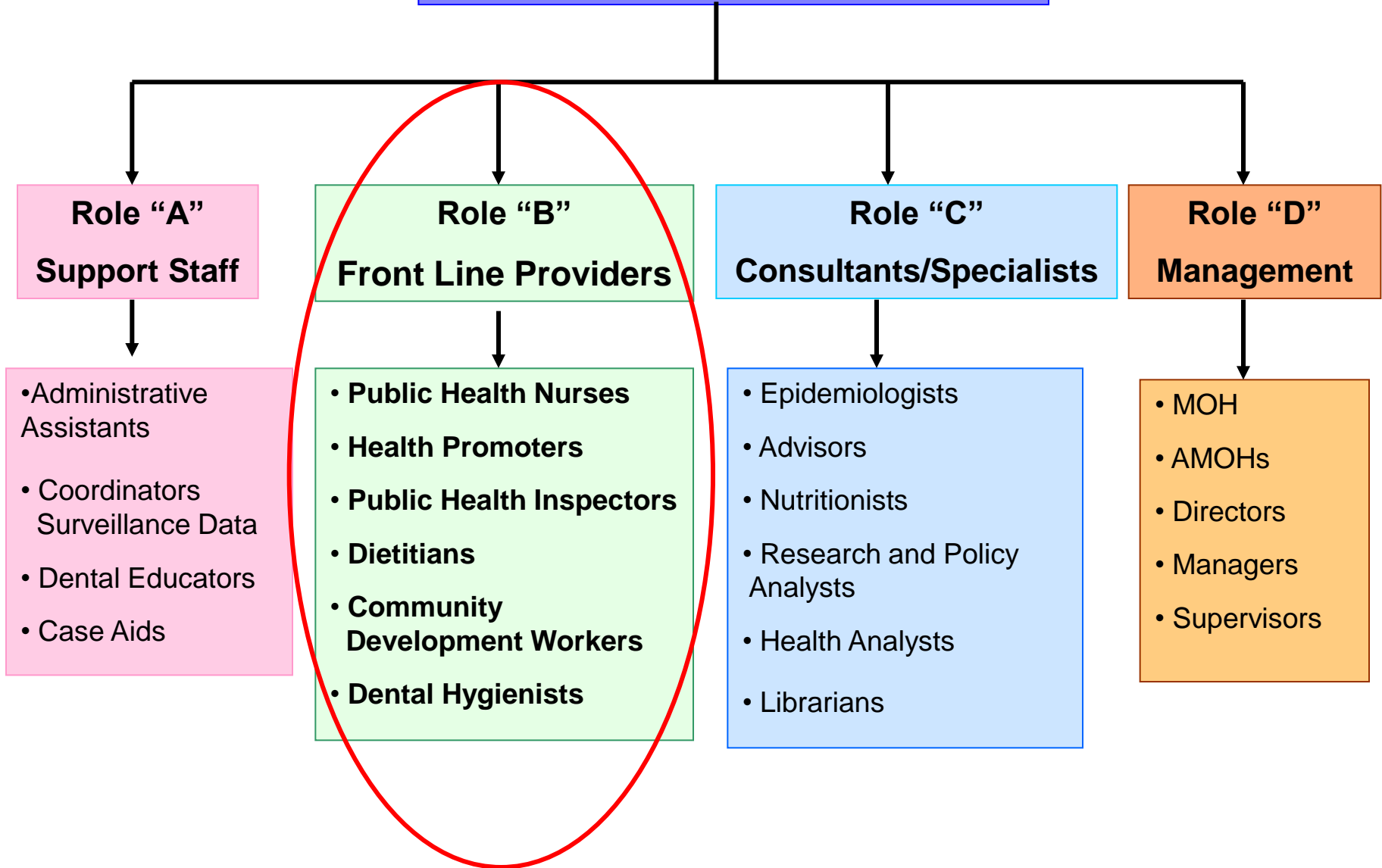
- 3 year PHAC Contribution Agreement (\$250,000)
- Build foundational level of select core competencies:
 - 1) Public Health Sciences
 - 2) Assessment and Analysis



PROJECT PARTNERS



Public Health Workforce





Module 1	Understanding the Population Health Approach
Module 2	Measures Used to Understand the Health of Populations
Module 3	Bringing Research Evidence to the Decision Making Table

OnCore Implementation Timelines

- 2-3 month/module
- 8-12 months total (with breaks)

oncore-encours.ca

OnCore-EnCours

TAKE YOUR PUBLIC HEALTH PRACTICE TO THE NEXT LEVEL

OnCore builds the skills professionals need to tackle today's complex public health challenges

LEARN MORE

LOGIN

demo



HOME

[Course Introduction](#)
[Course Navigation](#)
[Quick Facts](#)
[Facilitated Case Study Resources](#)

MODULE 1

Understanding the
Population Health
Approach

[Module 1 Self-
Assessment](#)
[Lesson 1:
Introduction to
Public Health](#)
[Lesson 2: The
Population Health
Approach](#)
[Lesson 3: Shifting the
Curve](#)
[Lesson 4:
Understanding the
Determinants of
Health](#)
[Lesson 5: Applying
Determinants of
Health to Public
Health Practice](#)
[Lesson 6: Public
Health and the
Health Care System](#)
[Lesson 7: Applying
the Population
Health Perspective](#)

MODULE 2

Measures Used to
Understand the
Health of Populations

[Module 2 Self-
Assessment](#)
[Lesson 1:
Understanding
Person, Place, and
Time](#)
[Lesson 2: Basic
Measures Used to
Understand Public
Health Problems](#)
[Lesson 3:
Understanding Rates](#)
[Lesson 4:
Understanding
Confidence Intervals](#)
[Lesson 5: The Love
Canal Case Study](#)

MODULE 3

Bringing Research
Evidence to the
Decision Making Table

[Module 3 Self-
Assessment](#)
[Lesson 1: Why is
Research Important?](#)
[Lesson 2: How to be
a Critical Consumer
of Research](#)
[Lesson 3: How to
Develop a Focused
Question](#)

Facilitated Case Studies

- 13 facilitated case studies
- 2 hour sessions
- small group learning (10-12)
- re-inforce and apply concepts from the lessons
- problem-based learning principles

For Participants

For Facilitators

OnCore facilitated case studies were designed for small group learning and utilize problem-based learning principles. The case studies are an integral part of the OnCore education program. If you've been identified to be an OnCore facilitator, rest assured you do not need to be a subject matter expert. All of the materials you need to run the sessions, including answer keys, are provided below in the Guides for Facilitators.

GETTING STARTED FOR FACILITATORS

Facilitator's Role

- Determine implementation schedule of facilitated sessions (when, where, and how often)
- Inform users about session dates/times
- Organize and lead the facilitated case study sessions
- Support participants in applying content from the online learning modules to their work
- Keep group focused and on time
- Encourage participation from everyone

Read More

GUIDES FOR FACILITATORS

Module 1

[Module 1, Lesson 1](#)
[Module 1, Lesson 2](#)
[Module 1, Lesson 3](#)
[Module 1, Lesson 4](#)

Module 2

[Module 2, Lesson 1](#)
[Module 2, Lesson 2, 3, 4](#)
[Module 2, Lesson 5](#)

Module 3

[Module 3, Lesson 1](#)
[Module 3, Lesson 2](#)
[Module 3, Lesson 3](#)

OnCore Facilitator Testimonials



“OnCore is unique because it was built for front line public health practitioners. Online lessons and facilitated group sessions are interactive and engaging and built with adult learning principles in mind. I recommend the program for any organization looking to build their staff’s skills and knowledge in applied epidemiology.”

John Barbaro, Epidemiologist, Simcoe Muskoka District Health Unit



“Facilitating the OnCore case sessions was fun and rewarding. My team looked forward to our discussions and the interactive games. I liked that all the materials I needed to facilitate were provided and that there was little prep work. The program was flexible; we could choose to do all of the activities or I could pick those that best suited our needs.”

Sarah Loseth, PHN, Supervisor, Peel Public Health



“Everything we needed to complete OnCore was provided. We did the online lessons and then came together to apply the concepts to our practice through compelling case studies.”

Brandon Cheung, Research Assistant, Public Health Ontario



Facilitator's Role:

- Facilitators do not need to be subject matter experts
- Determine implementation schedule of facilitated sessions (when, where, and how often)
- Inform users about session dates/times
- Organize and lead the facilitated case study sessions
- Support participants in applying content from the online learning modules to their work

OnCore

Core skills for public
health practice



EnCours

Compétences essentielles
pour la pratique de
santé publique

Facilitated Case Study Activity

OnCore Pilot

- Three Ontario Public Health Units piloted OnCore in 2014-2015
- A total of 112 public health professionals from a variety of professional backgrounds and years of experience participated
- Evaluation (pre/post-tests and focus groups)

OnCore Pilot Implementation

Site	Module(s) Piloted	# of Participants	Implementation Model
Peel	1-3	87	Existing teams and cross divisional
Durham	1	10	Cross divisional
Simcoe	2	15	Cross divisional, specific offices

OnCore Module Pre-Post Test Results

Modules	Improvement in Score (%)	p-value
Module 1	13	<0.001*
Module 2	17	<0.001*
Module 3	13	<0.001*

*Statistically significant difference between pre-test and post-test scores at $p < 0.05$

What users are saying...

"I really like this course [compared to others I've taken]. It's engaging."

"OnCore helps organizations and individuals, new or experience, speak the same language and create a common ground for approaching their work."

"I have worked in PH for 14 years and I felt that I learned something new"

"It was a good team building experience"

OnCore Limitations

- Course does not track progress/completion
- Certificate of completion

OnCore and Continuing Education Credits

- Modules may be used towards continuing education requirements for Canadian Nurses' Association certification for Community Health Nursing
- Can assist PHNs studying for Public Health component of CNA Certification Exam
(e.g. population health, determinants of health)

Organizational Implementation

MODEL	ADVANTAGES	DISADVANTAGES
EXISTING TEAM APPROACH (i.e., staff who regularly work together)	<ul style="list-style-type: none">• Convenience• Facilitated by own supervisor/manager• Application to the team's work and/or individual assignments• Opportunity to reflect on content in 1:1 meetings with supervisor/manager• Increased participant accountability	<ul style="list-style-type: none">• Challenge in meeting operational needs if all staff are required to be present for facilitated case studies

Organizational Implementation

MODEL	ADVANTAGES	DISADVANTAGES
CROSS DIVISIONAL GROUP APPROACH	<ul style="list-style-type: none">• Opportunity for cross divisional staff interaction• Increased awareness of each other's work• Potential for rich discussion; application of learning to more than one area of public health• Flexibility for meeting operational needs for service delivery	<ul style="list-style-type: none">• Initially, the group may have to spend some additional time getting to know each other• Potential for decreased accountability

For New and Experienced Employees

OnTrack: Helping new employees onboard

**Rolling cohorts (OnCore teams)
2016-17 plan**



How can OnCore be implemented in your organization?

OnCore

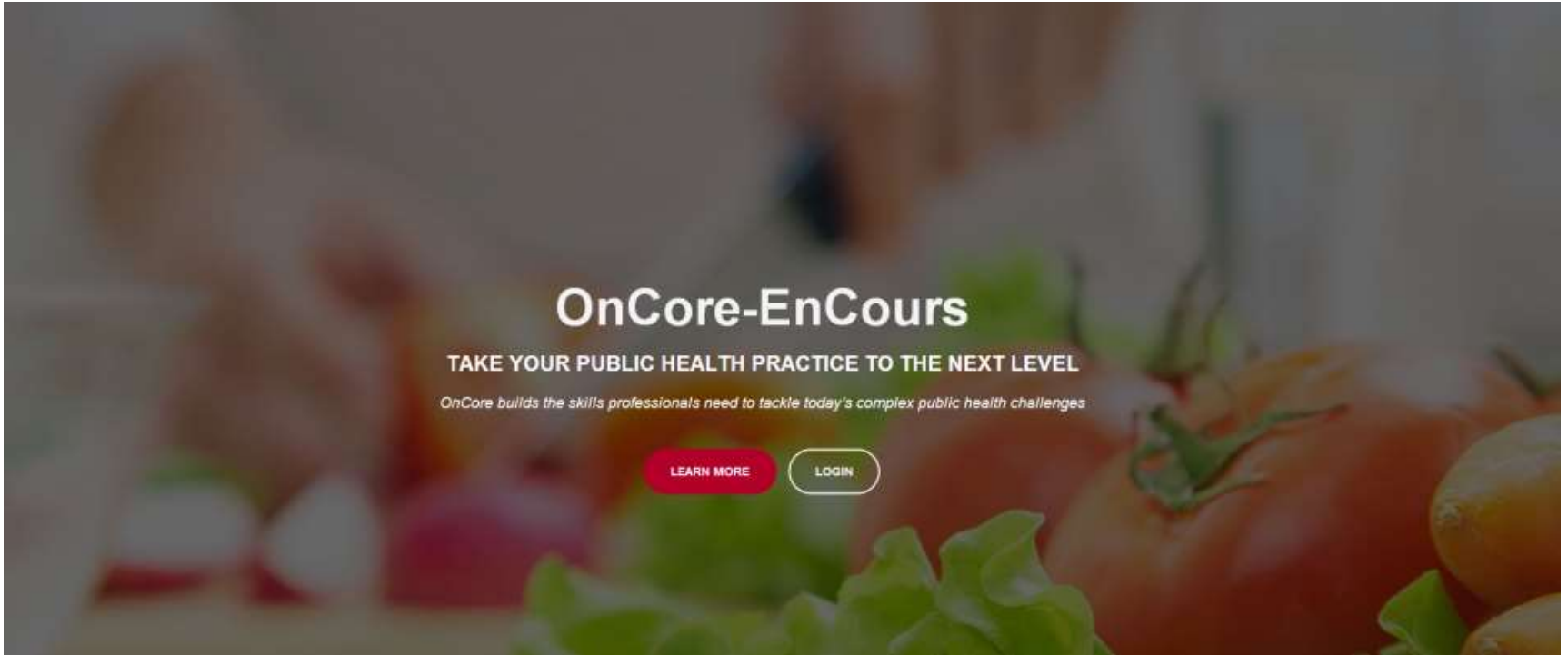
Core skills for public
health practice



EnCours

Compétences essentielles
pour la pratique de
santé publique

How to Register



OnCore-EnCours

TAKE YOUR PUBLIC HEALTH PRACTICE TO THE NEXT LEVEL

OnCore builds the skills professionals need to tackle today's complex public health challenges

LEARN MORE

LOGIN



Reflects the Public Health Agency of Canada's core competencies

Users will learn to apply a population health approach, use data to understand public health problems, and bring research evidence to the decision making table.

Designed for both new and experienced public health professionals

OnCore helps individuals and organizations speak the same language and create a common ground to approach public health problems.



OnCore is easy to implement and is designed to be completed both individually and in small groups at the workplace.

[REGISTER FOR ONCORE](#)





Register

I am registering as:

Individual **Group (i.e. 10+ registrants) ?**

The mandatory fields are marked in bold.


First Name:

Last Name:

Gender:

Male Female

Date of Birth:

  (Date Format: yyyy-mm-dd)

Years of Service in Public Health:

Organization:

Job Title:

Address 1:

Address 2:

City:

Province:

Country:

Canada

Questions and Discussion



visit:
www.oncore-encours.ca

OnCore

Core skills for public
health practice



EnCours

Compétences essentielles
pour la pratique de
santé publique

or contact

beverley.bryant@peelregion.ca

julie.atkinson@peelregion.ca