

What is the role of the RN in Primary Care/Public Health Collaboration?

Monica Swanson, BScN, RN

June 1 2016

Background

- Inefficient systems – cost/outcomes
- Access to care
- Population health approach to primary care
- Nurses role

Research questions

- What is the role of the RN in PC/PH collaboration
- Is the BC RN scope of practice sufficient to practice in this role?

Methodology

- The scoping review
- seeks to identify pertinent themes within a given field
- inform policy and practice initiatives

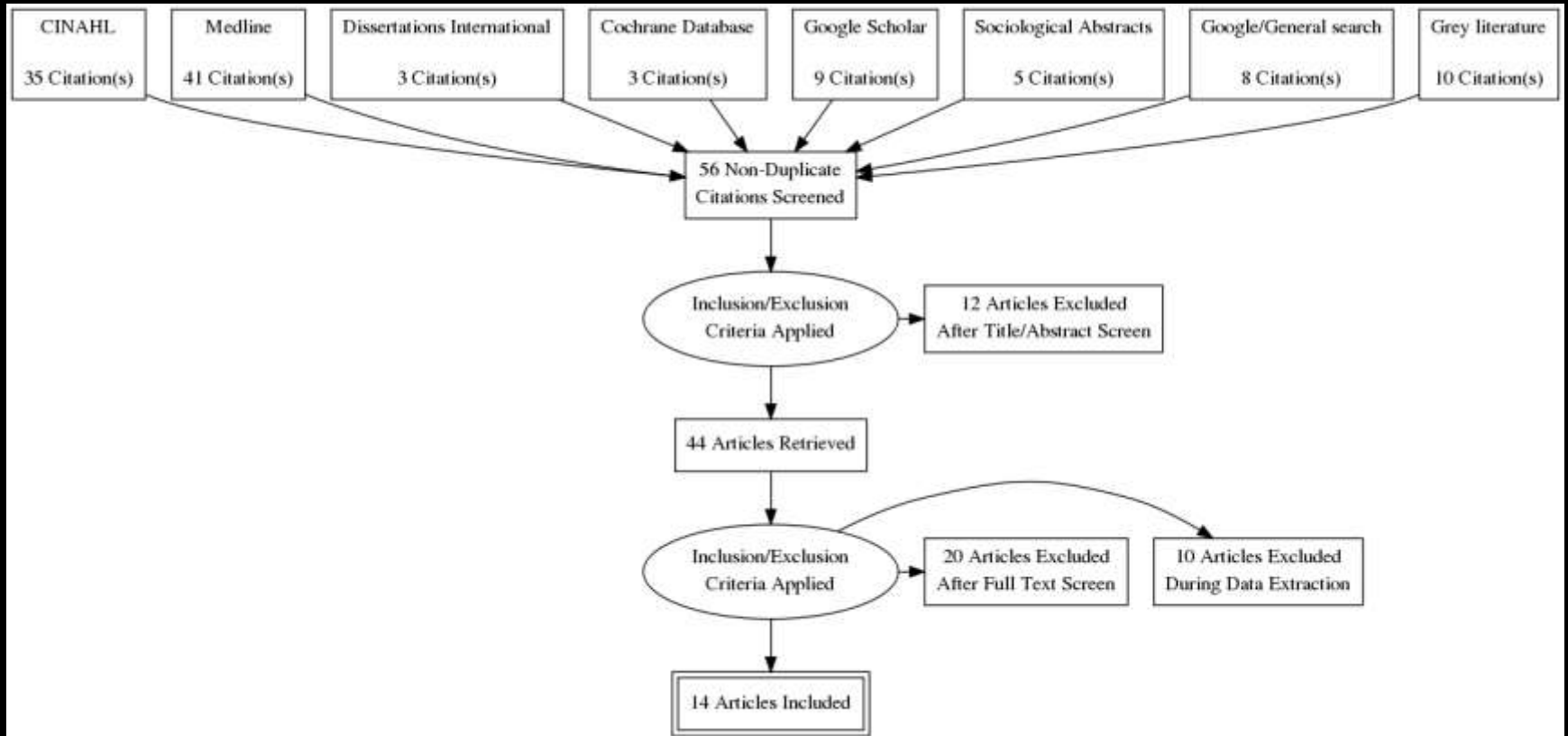
Inclusion/exclusion criteria

- Published in English
- Addressed Canadian, US, UK, Australian, New Zealand or Western European health care systems
- Addressed the role of the nurse in PC/PH collaboration

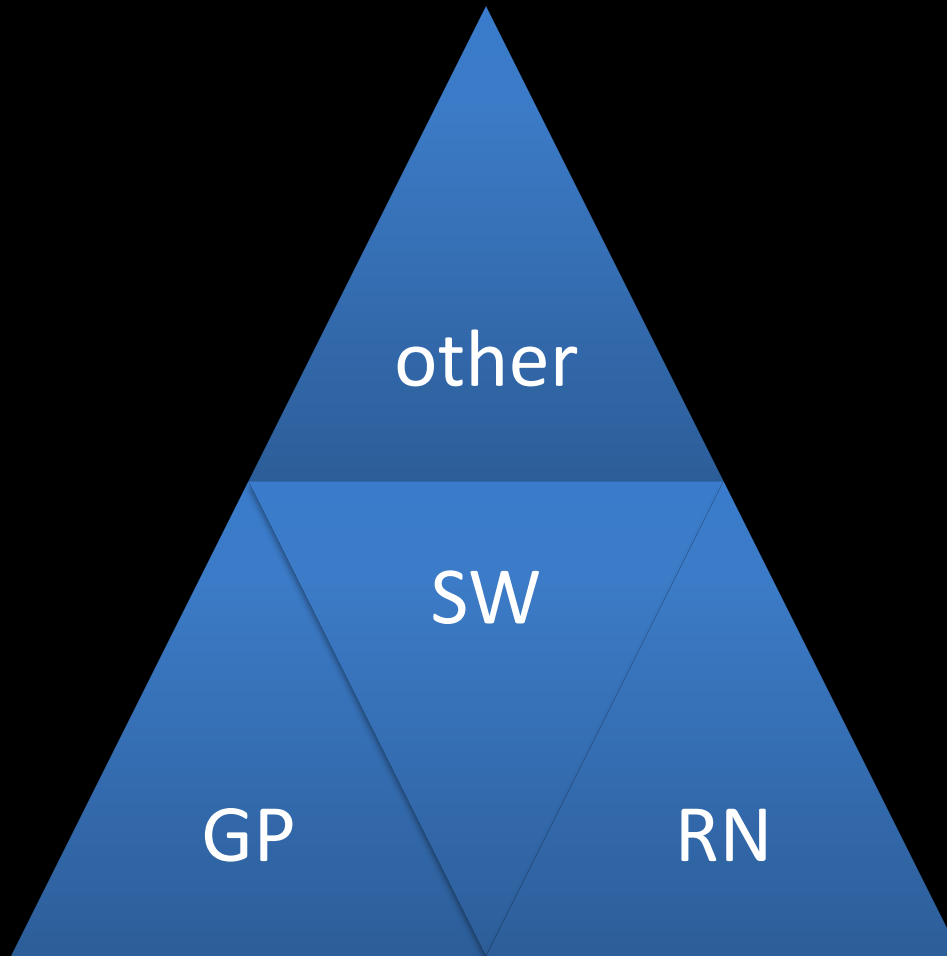
Criteria cont'd

- Structures
- Processes
- Outcomes
- Markers of successful
- Was a published or unpublished primary study, thesis or literature review using any type of method

PRISMA

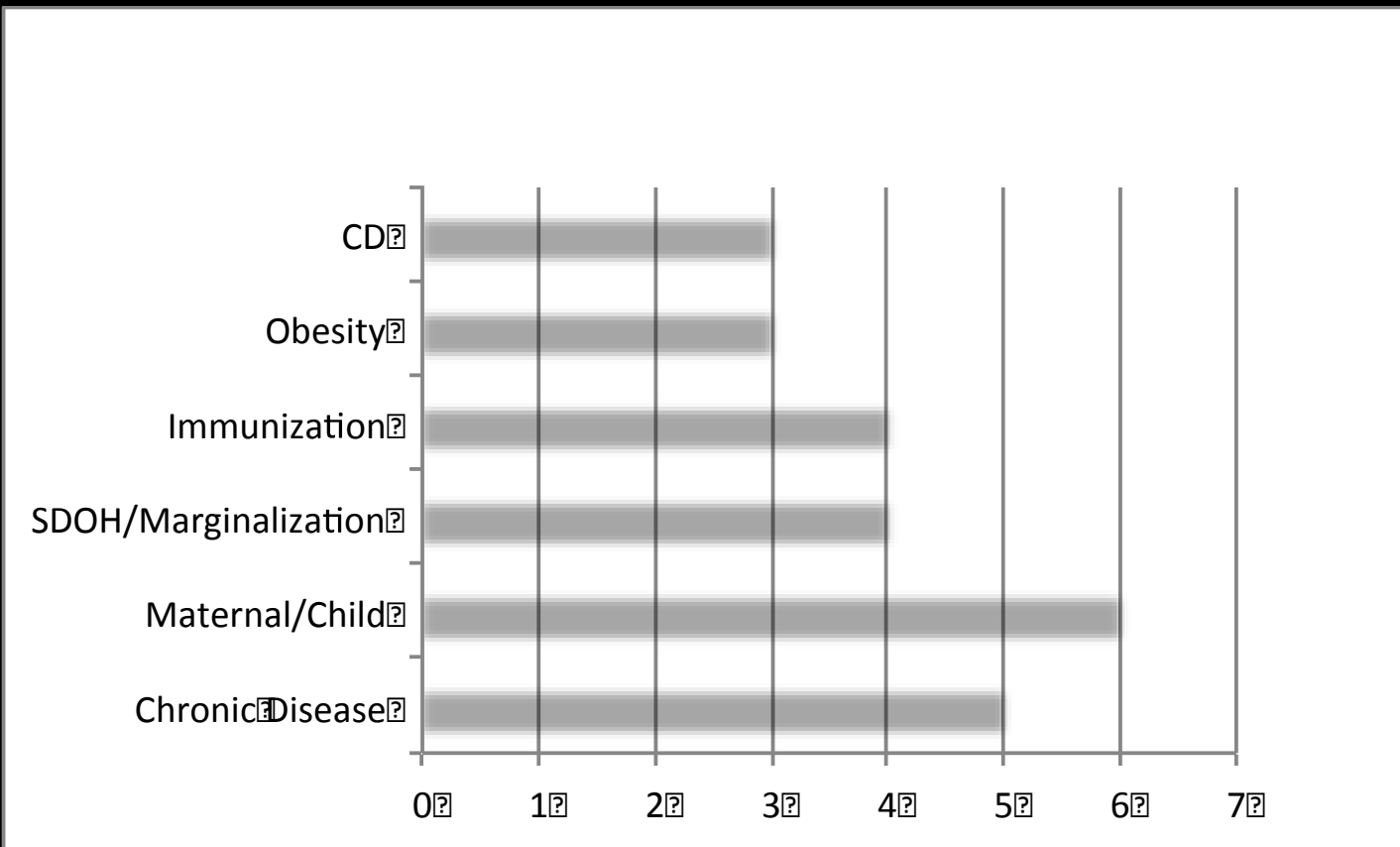


Players



Findings

- Common health foci of collaborations



Motivators

Improve quality:

- Coordination of care
- Improve access to PH and PC
- Pt. centred care
- Improve health outcomes
- Evidenced based tools
- Mandates/targets

Challenges

- Role confusion
- Payment schemes FFS
- No multidisciplinary teams
- PH/PC not on the same page
- No data system linkages

Characteristics

- Interprofessional trust and respect
- Colocation
- Communication – FTF, working meals
- Evidenced based tools to support collab.
- Targeted care based on utilization stats
- CD focused care

Nurse's role

- Secondment or integration of PHN
- Care coordinator
- Team leader
- Group visits in PC settings
- Generalist role in PC setting
- Advisor (PH CD)
- Case manager

Recommendations

- Role clarity
- Education about collaboration
- EMR/database linkage PC/PH
- PC payment reform
- Start with joint PC/PH small project
- Time and resource allocation

Conclusion

- The nurse is an important player in PC/PH collaboration.
- System restructuring is needed
- Role clarity is important
- Start small on a clinical project
- Communication/colocation

Thank you!

- References available on request
- mswanson@langara.bc.ca