

# Building the future of the Public Health Workforce: Strengthening child development trajectories within Ontario's Healthy Babies, Healthy Children program

Community Health Nurses Conference of Canada— June 22, 2017

---

Amanda McManaman, RN, BScN, CCHN(C), Public Health Nurse




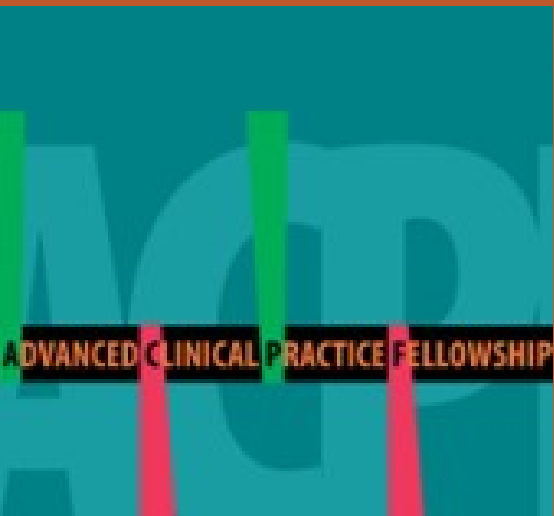
RNAO  
BEST PRACTICE  
SPOTLIGHT  
ORGANIZATION  
CANADA

ORGA  
VEDE  
EXEM

# Objectives

---

- ✓ successes and challenges using a Knowledge-to-Action framework
  - ✓ gain insights into the value of partnerships and collaboration
  - ✓ learn innovative strategies
- 



**Team:**

Ellis, Primary Mentor

Rowe, Grey Bruce Health Unit

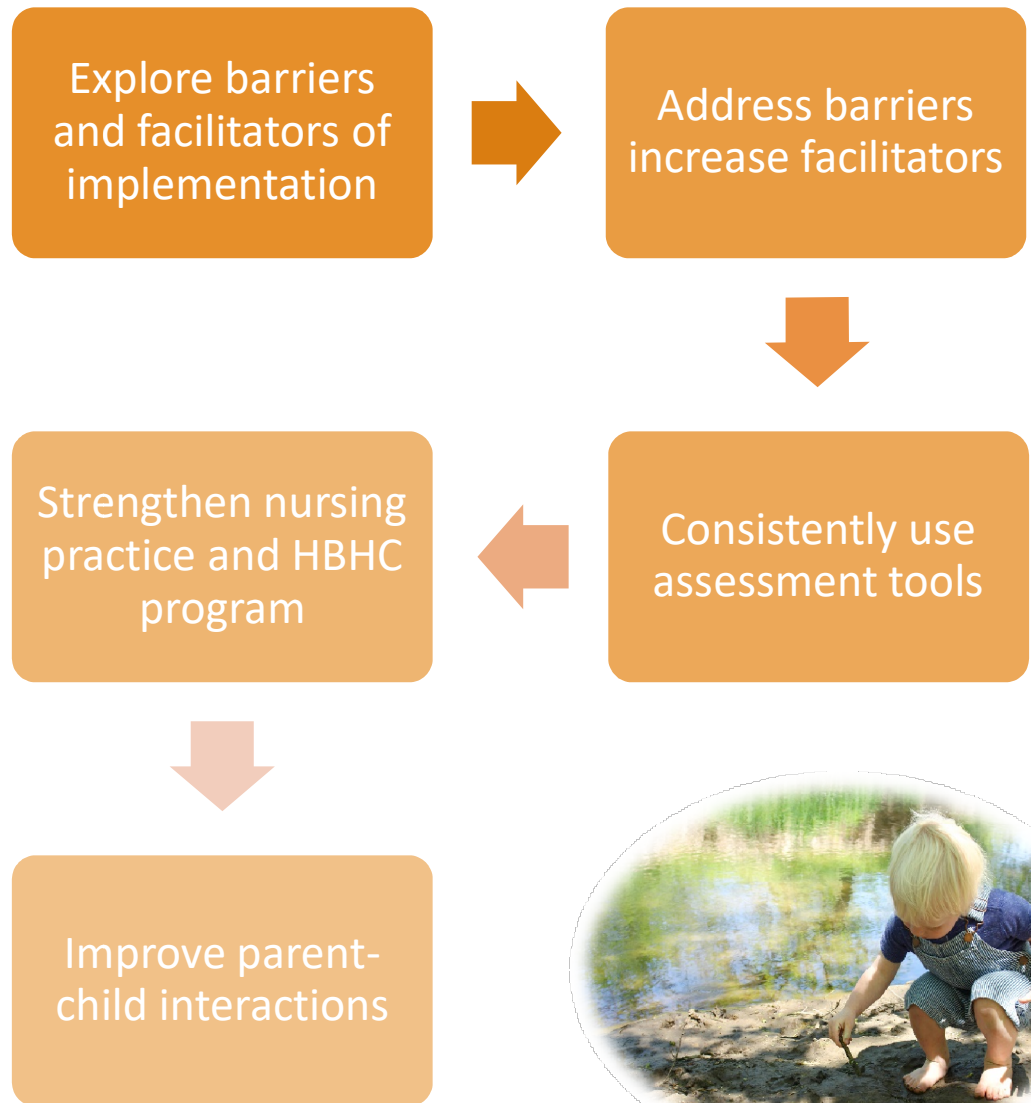
Don Johnston, Grey Bruce Health

MacDermaid, Grey Bruce Health Unit

Delmaestro, Middlesex London

Candeloro, Niagara HU

..., Toronto Public Health



© Can Stock Photo ChristinLola

# Parent-Child Interaction Scales

---

## THE FEEDING SCALE



© Can Stock Photo NikolayK

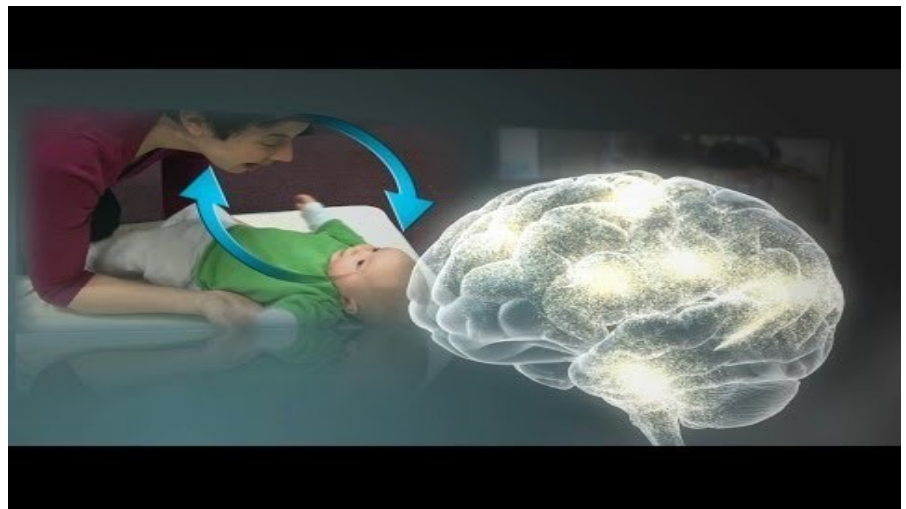
## THE TEACHING SCALE



© Can Stock Photo monkeybusiness

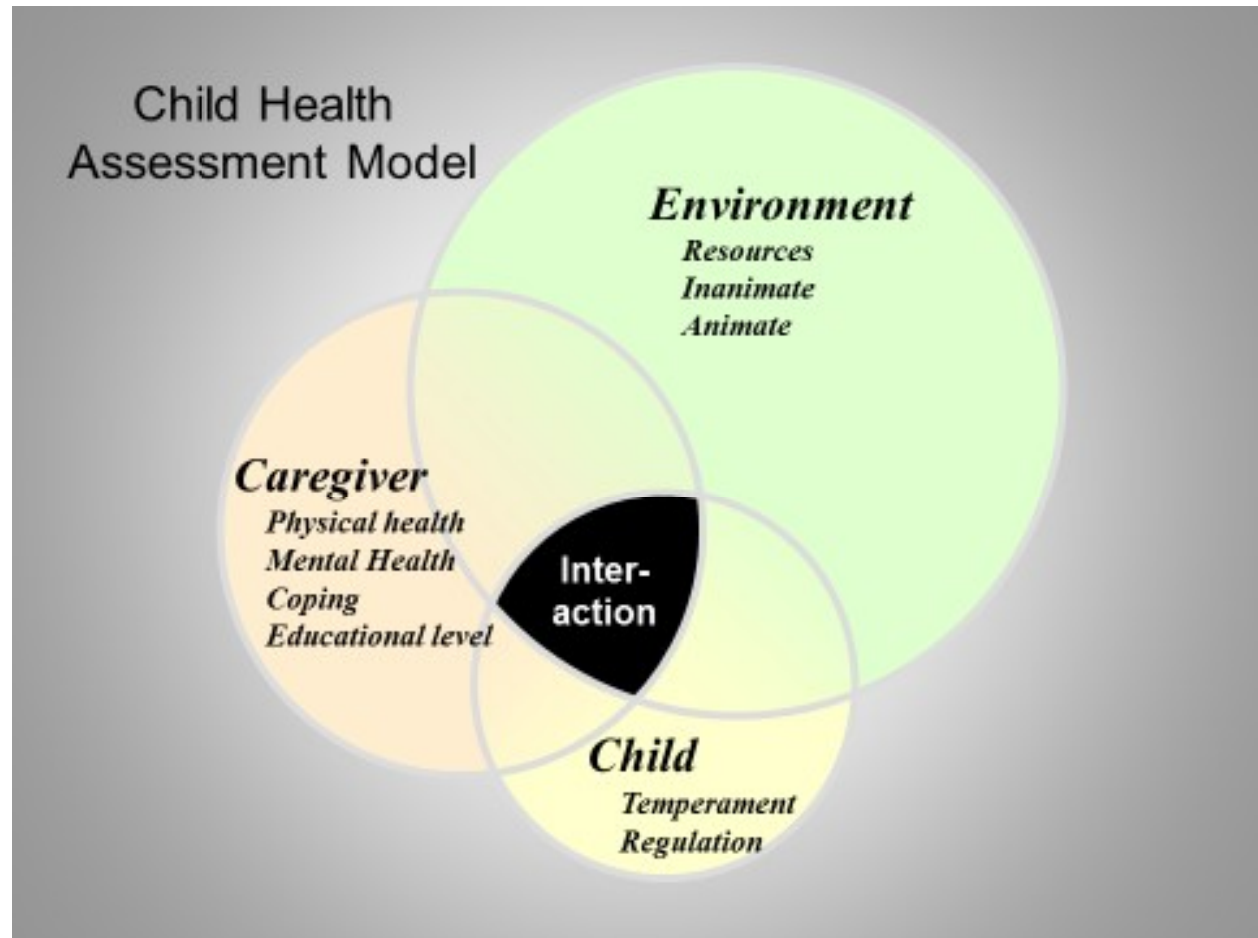
What does parent-  
child interactions  
have to do with  
IQ?

<http://www.ncast.org/>

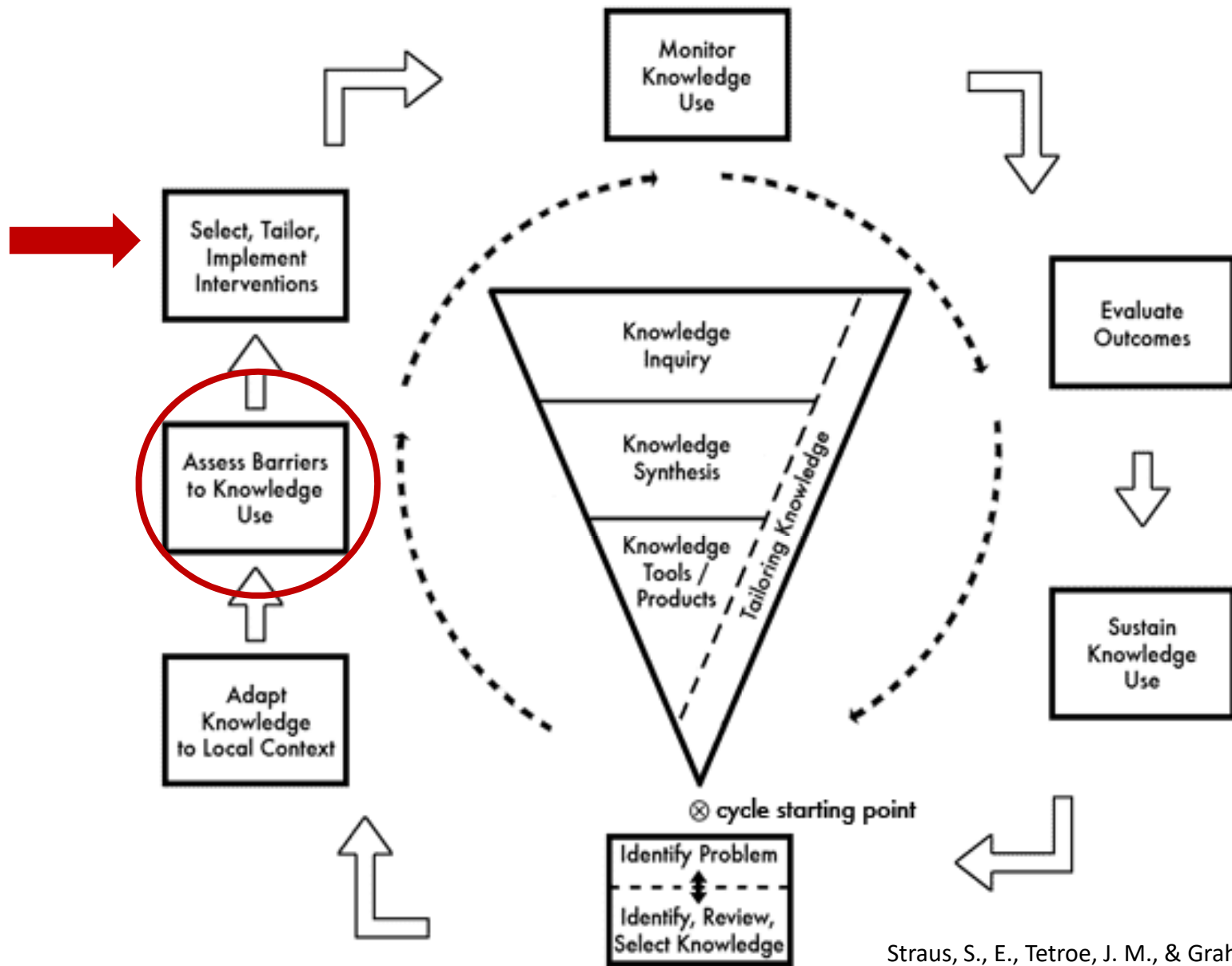


<http://developingchild.harvard.edu/science/key-concepts/serve-and-return/>

system that touches the lives  
children-as well as mothers  
and during pregnancy-  
an opportunity to  
then the foundations and  
activities that make lifelong  
development possible  
er on the Developing Child at  
rd University, 2010)



Used with permission 2015, NCAST Programs, University of W



Straus, S., E., Tetroe, J. M., & Graham, I. D. (2013). *Knowledge Translation in Health Care: Moving from Evidence to Practice* (2nd ed.). Chichester, UK: Wiley-Blackwell.



## Objective 1: Scanning the Literature



# Interviews

A 3D-rendered scene featuring a white banner with the word 'Interviews' in black, a blue desk surface, an open book with cursive text, and a grey electronic device.

*Laorem ipsum dolor sit amet, consectetur  
adipiscing elit. Vivamus vel*

Objectives 2-3: Environmental Scan



Objectives 2-3: Facilitate a focus group with GBHU  
HBHC Public Health Nurses

# Overview of Commonly Cited Barriers

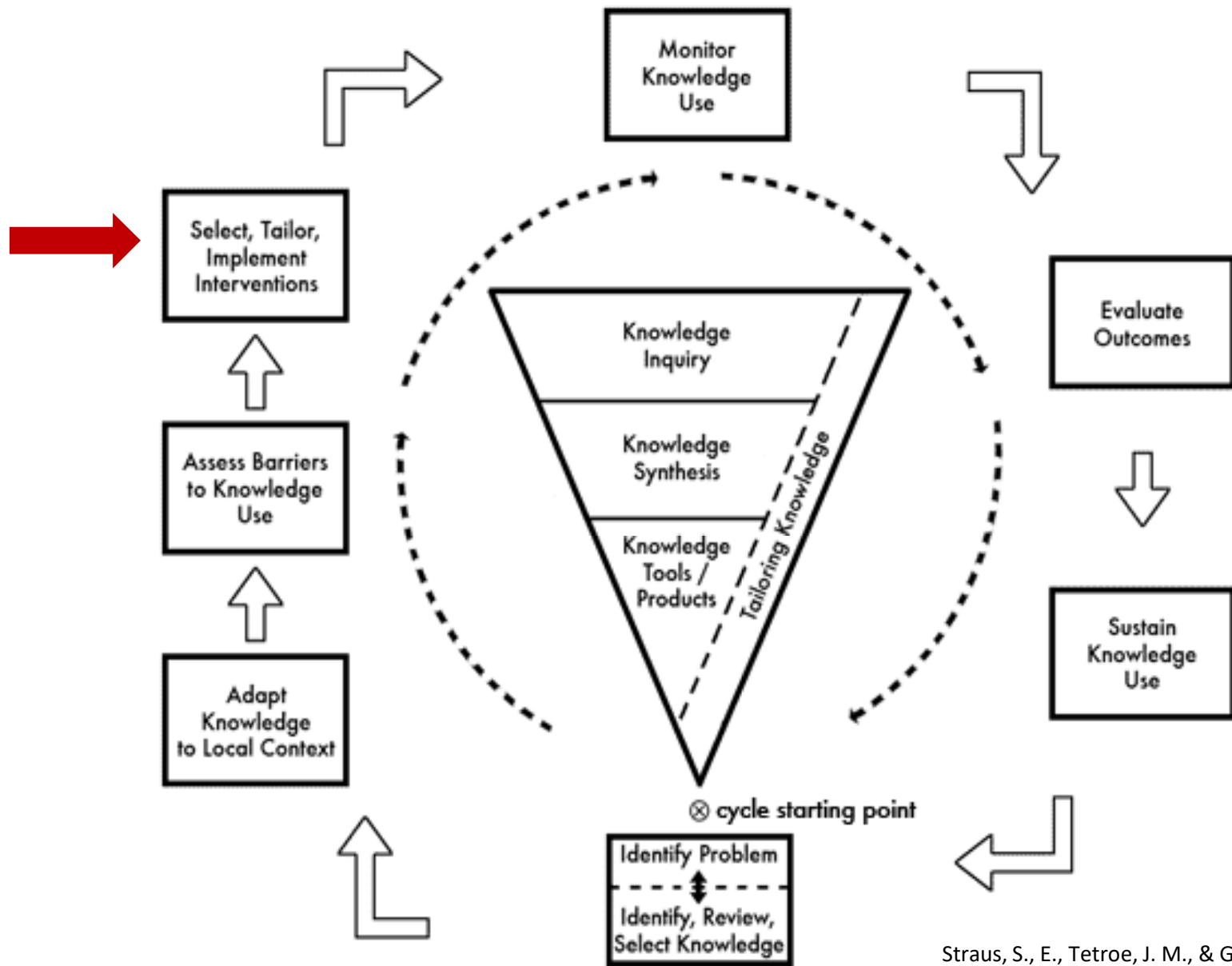
---

## ENVIRONMENTAL SCAN

- Training and role clarity
- Using PCI scales in high-risk home settings
- Workload and time
- Attitudes/beliefs in the evidence

## FOCUS GROUP

- Training
- Acceptance of NCAST PCI scales as a valuable tool
- Using PCI scales in high-risk home settings
- Role clarity



Straus, S., E., Tetroe, J. M., & Graham, I. D. (2013). *Knowledge Translation in Health Care: Moving from Evidence to Practice* (2nd ed.). Chichester, UK: Wiley-Blackwell.

# Strategies for Action

Children, healthy relationships confer a double benefit, both stimulating brain development and providing the protective environment that can buffer children from even very challenging stressors and stress effects

(from the Developing Child at Harvard University, 2016)



ASK AN EXPERT!



**Area of Need**

**Data Usage**

**Framework  
Selection**

**Ethic Approval**

**Literature  
Search**



# Thank you!



## Questions?

Contact:

[a.mcmanaman@publichealthgreybruce.ca](mailto:a.mcmanaman@publichealthgreybruce.ca)

Archived webinar:

<http://rnao.ca/events/exploring-barriers-facilitators-using-evidence-based-assessment-tools-healthy-babies-heal>

*No matter what form of hardship or threats may have been experienced, research shows that the children who end up doing well are most often those who have had at least one stable and responsive relationship with a parent, caregiver, or other adult. (Center on the Developing Child at Harvard University, 2010)*

# References

---

Center on the Developing Child at Harvard University. (2016). *Applying the Science of Child Development in Child Welfare Systems*. Centre on the Developing Child at Harvard University. Retrieved from [http://developingchild.harvard.edu/wp-content/uploads/2016/10/HCDC\\_ChildWelfareSystems.pdf](http://developingchild.harvard.edu/wp-content/uploads/2016/10/HCDC_ChildWelfareSystems.pdf)

Center on the Developing Child at Harvard University. (2010, July). The Foundations of Lifelong Health Are Built in Early Childhood. Centre on the Developing Child at Harvard University. Retrieved from <http://developingchild.harvard.edu/resources/the-foundations-of-lifelong-health-are-built-in-early-childhood/>

Falk-Rafael, PhD, RN, FAAN, A., & Betker, MN, RN. CCHN(C), C. (2012). The Primacy of Relationships: A Study of Public Health Nursing Practice from a Critical Care Perspective. *Advances in Nursing Science*, 35(4), 315–332.

Ministry of Children and Youth Services. (2012). HBHC Guidance Document. Retrieved from [http://chd.region.waterloo.on.ca/en/partnersProfessionals/resources/HBHC\\_GuidanceDocument.pdf](http://chd.region.waterloo.on.ca/en/partnersProfessionals/resources/HBHC_GuidanceDocument.pdf)

Pagagiota D. Tryphonopoulos BN, RN, PhD, Nicole LeTourneau RN, PhD, FCAHS & Enrico DiTommaso PhD. (2016). Caregiver-Infant Interaction Quality: A Review of Observational Assessment Tools. *Comprehensive Child and Adolescent Nursing*, 39(2), 107–138.

Rycroft-Malone, J., & Bucknall, T. (Eds.). (2010). *Models and Frameworks for Implementing Evidence-Based Practice: Linking Evidence to Action*. United Kingdom: Blackwell Publishing.

Straus, S., E., Tetroe, J. M., & Graham, I. D. (2013). *Knowledge Translation in Health Care: Moving from Evidence to Practice* (2nd ed.). Chichester, UK: Wiley-Blackwell.

*THE VALUE OF ASSESSING PARENT-CHILD RELATIONSHIPS: NCAST parent-child interaction tools*. Letourneau, N. (2016). Retrieved from: <http://en.beststart.org/past-events/hbhc-directors-meeting-2016-ncast-pci-training>